

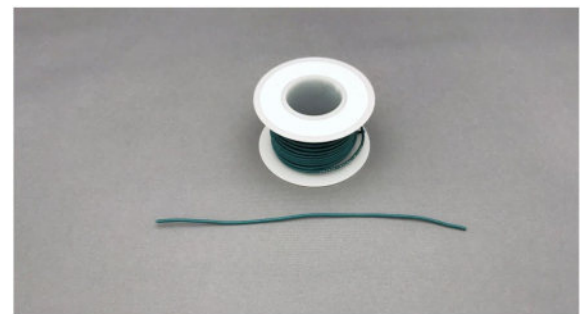
SWITCHED

ADAPTED TOYS



Fisher-Price BeatBowWow

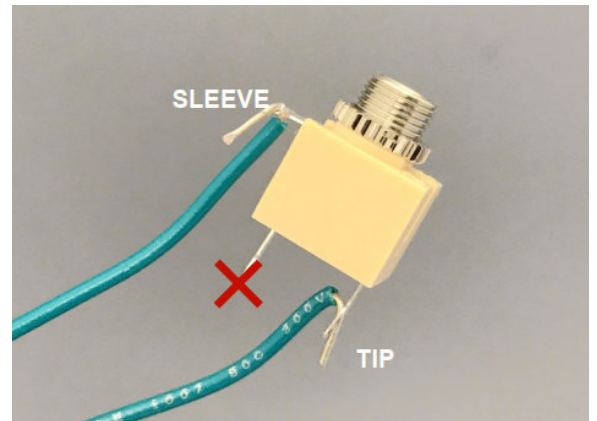
1. Unpack toy. Please try to preserve packaging as best as possible so toy can be re-packaged once adapted.
2. Turn on the toy and make sure it works.
3. Flip over the toy and remove the six screws around the toy. You do not need to remove the screw for the battery cover.
4. Remove the bottom plastic cover to reveal the circuit board.
5. Remove the wire connector by gently wiggling it out.
6. Prepare **four 10cm length** wires.
7. Use a wire stripper to strip 1cm off each end on the four wires.



8. On a mono jack, loop a wire through the “sleeve” and a second wire through the “tip.”

Repeat for the second mono jack with the 2 remaining wires.

9. Solder these 4 connections.



CHANGES AND SUGGESTIONS here on

Before drilling:

- *Pre-fit mono jacks to ensure that on the inside of the toy the jacks and wiring will clear the surface of the board when toy is re-assembled.*

- *Does not fit =>*



- *Only the above pictured beige jack or smaller one, will fit.*

- *Used:*



102-5674-ND
MJ-3507



10. Mark two points with a sharpie by the left foot about halfway up the foot so the drill bit will miss the circuit board while drilling.

11. Use a 5/32" drill bit to drill the two holes.



12. Solder the wire onto the circuit board as depicted below.

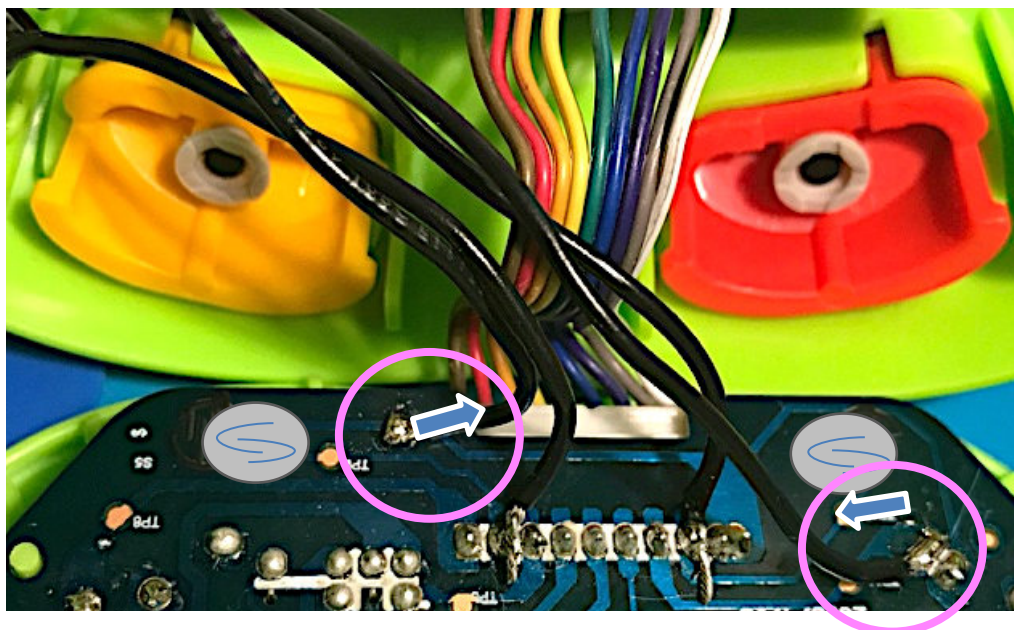
Notes:

Feet must clear all wiring on the board to be able to contact the pads printed on the board.

Bad – wire soldered on same side as feet causing interference.

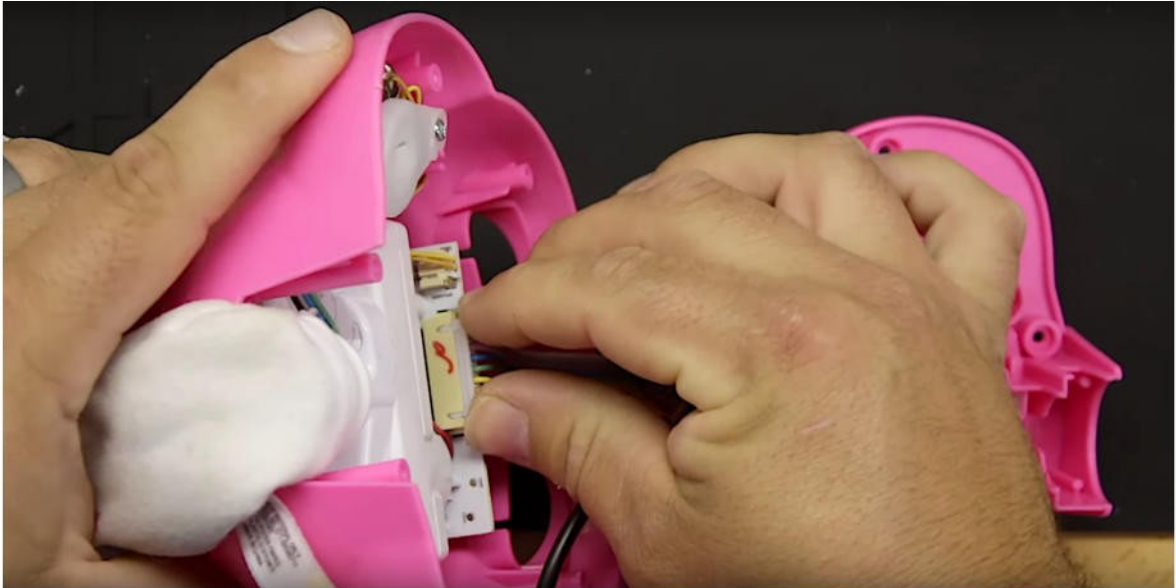


Good – wires soldered on board in direction away from feet pads.

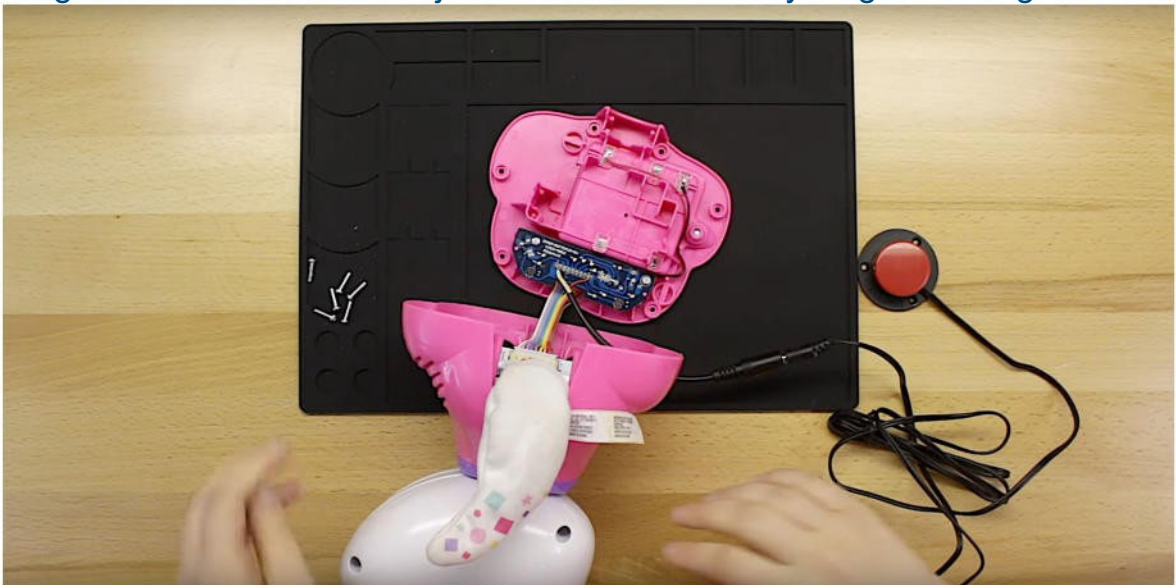


REMAINDER OF INSTRUCTIONS – NO FURTHER SUGGESTIONS OR CHANGES.

13. Reconnect the wires.



14. Plug a switch into the mono jack to make sure everything is working.



15. Reinstall the toy by putting back the two plastic buttons at the front of the toy.



16. Reinstall the 6 screws holding down the base plate.

